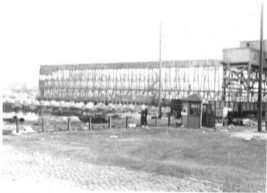




Out among the tall timber at Wiggin Lumber.



Congress and Summer Street bridges under guard.



Hoosac Docks — or what was left of them — absorbed the attention of TRs for many months. Until the tide of war had definitely turned, that overhead grain conveyor might have had more valuable usage than for pigeon nesting — and sitting.



See that TR pacing along the Horn track? Pier 1 South Boston is already half demolished. What a fire those tinder timbers would have made. That was a good warm lonely shack, though.