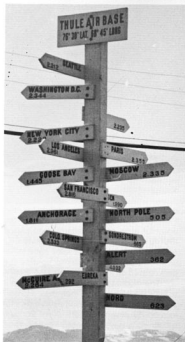
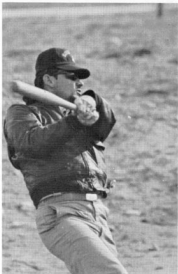


Chief Jorgensen warms up for some cold beer later.



Wind storms known as Phases occur during the winter months. Phase conditions range from a Phase One, with winds from 20 to 30 knots, to a Phase Three with winds of 50 knots or more. Because of extreme chill index temperatures caused by the winds, these storms are dangerous.

The second highest wind ever on the face of the earth — 207 m.p.h. was recorded at Thule on March 8, 1972.



Chief Clifton hits a blooper, and never made it to first.