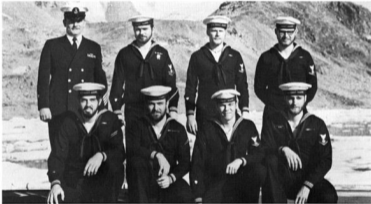


ponies used for ship's electrical power.

Among the various cables, pumps, valves and piping lines, he will occasionally catch a glimpse of that elusive and rare bird known as the "Snipe". The snipe will be going about his various tasks of checking gauges, pumping excess bilge water, looking for any kind of a leak, or engaged in his favorite sport of skylarking. Should a malfunction occur, the new man will suddenly see a flock of these snipes with wrenches, screw drivers, or precision instruments pounce upon a steed and cure his ills with undue speed.

The new man can leave B-3 with a sense of pride knowing that whatever happens, when SOUTHWIND is heading home, B-3 can be counted on to help push her a little harder and faster.



"B2" Back Row (Right to Left) EN3 Gerald J. Runde, EN3 Peter L. Kupczyk, EN2 John S. Zarzycki and ENCS Ronald A. Petersen.

Front Row (Right to Left) EN3 Ronald L. McCann, EN3 George R. Rutkowski, FA Daniel F. Swain and FA John P. Fernandez.

## E

Whenever a sailor aboard SOUTHWIND thinks of electrical power or "Ready Kilowatt", he thinks of the Electrician's Mate. Under the control of "M" Division, these men are responsible for the maintenance of an electric plant which is similar in many details to those which provide electrical power for the communities of the United States.

These highly skilled craftsmen and "bonus" babies are required to have extensive knowledge of electrical fields and electricity's relationship to machinery. Of primary importance is their maintenance of all electrical equipment associated with our main propulsion plant. In addition, they are responsible for all other electrical equipment on board SOUTHWIND with the exception of her electronic and communications gear.

Whatever it is, if it makes, carries, stores or uses electricity, it is the business of the men in the electric shop.

## DC

Damage Controlmen might be considered one of the busiest crew men on the ship. Their rate includes carpentry, weld-

ing, brazing and cutting torch work, plumbing, and the ships all around handy man. They are also responsible for the ship's watertight integrity.

The DC can be found working anywhere from the engine room to the top of the pilot house, from the bow to the stern; working at these various tasks.

During an emergency, these men provide the skilled guidance needed for fire