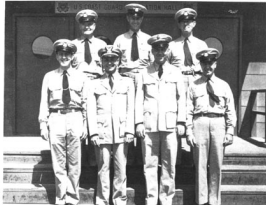


WATERFRONT INSPECTION

A primary reason for the comparatively small loss due to fire in LA Harbor is the work of the Fire Prevention, Waterfront Inspection Unit of the Fire Division. Made up of nine specially trained inspectors, Assistant OIC Mark Raspberry, Chief Specialist, and directed by Lt. Thomas E. Downey, the Fire Prevention Unit has done its job quietly and efficiently.

That job has been to inspect the complete waterfront and all of its loading facilities as well as ships at dock for fire hazards. Hazards reported are also given recommendations to reduce the possibility of their causing a fire. More than 90% of such recommendations have been complied with. That in itself is a fine record of achievement, but further, it speaks for the outstanding liason work of Lt. Downey and his men. They deal with all the services and civilian companies using this harbor's facilities.

Fire Prevention Personnel: T. E. Downey, C. A. Carlton, J. L. Mitchell, L. V. Pometta, J. M. Egus, M. H. Raspberry, E. R. Foe, V. L. Russell, J. M. Carlson, C. E. Thompson, J. W. Sawyer, W. C. Selph, Doris Leffler, R. E. Moore, O. C. Boyd, G. E. Sellers, E. C. Jenkins, and H. H. Altizer.



These seven men were first fire prevention unit



Complement has grown since start in April, 1943



Men in top picture:
(lower row) Mitchell,
Lt. Downey, Chief
Raspberry, Bucholz
(top row) Thompson,
Carlton, Bauermeister.

Lt. T.E. Downey